

*MASF 31st Annual International Miniature Art Show - Award Winners*



**Best of Show**  
*Looking East* by Gail MacArgel 3 1/2" x 3 1/2"



**Best Work By A First Time Entrant**  
*The Chase Is On* by Jo Hodos 7 1/4" x 2 1/2"



**Judges' Second Choice**  
*Just A Dusting (Staplehurst, Kent)* by C. Pamela Palco  
4 1/2" x 3 1/2"



**Best Work By A Young Artist**  
*Brook's Lake* by Rachele Siegrist 4" x 2"



**Excellence In All Entries**  
*Akua* by William Mundy 2 1/4" x 3 1/2"



**Best Traditional Portrait Miniature**  
*Jemma* by William Mundy 2 1/4" x 3 1/2"

**Acrylic**



First: *Trance I* by Majy Benjamin 5" x 3 1/4"

**Oil**



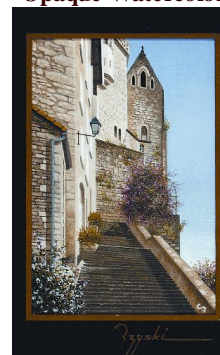
First: *Shining Edge* by Clifford T. Bailey 4 1/2" x 4 3/4"

**Drawing and Pastel**



First: *Remains Of Summer* by Laura Von Stetina 4" x 5 3/4"

**Opaque Watercolor**



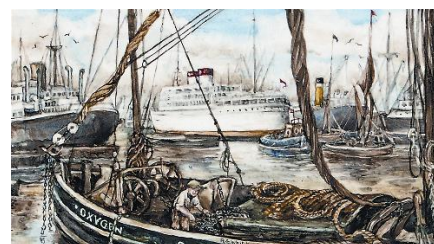
First: *Le Grand Escalier* by Christian Rzycki 2 1/4" x 3 1/2"

**Mixed Media**



First: *Vase With Flowers* by Nira Schwartz 4 1/4" x 5 1/2"

**Fired Porcelain and Enamel**



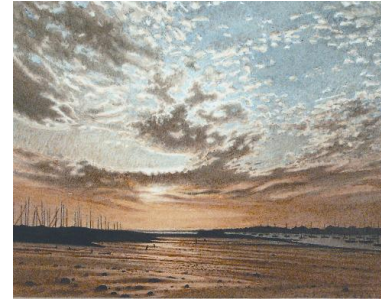
First: *London Docks* by Rita E. Whitaker 4" x 2 1/2"

### Printmaking



First: *Lake Shore Drive, Chicago* by Michael Slattery 5 3/4" x 4 1/4"

### Transparent Watercolor



First: *Sunrise At Dell Quay, UK* by Alan Farrell

### Sculpture and Scrimshaw



First: *Homeward Bound* by Charles Hargraves 4 1/2" x 6 1/2"

### Abstract and Surrealism



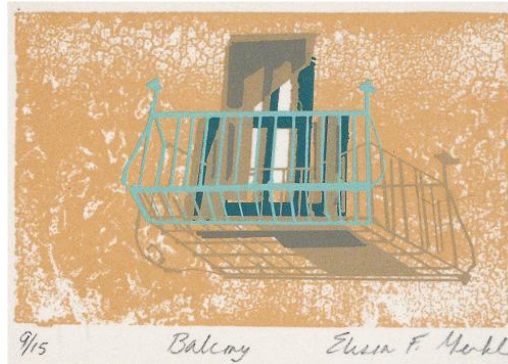
No. "A Rose-tinted Romance" L. Vincent  
First: *A Rose-tinted Romance* by Lucy Vincent 3 3/4" x 3"

### Birds and Animals



First: *Lunch At The Torrs* by Eleanor Torr 4 1/2" x 2"

**Exterior or Architectural**



First: *Balcony* by Elissa F. Merkl 4 1/2" x 3"

**Floral and Botanical**



First: *Carmel Balcony* by Heide Presse 7" x 3 1/4"

**Human Figure**



First: *Grace* by Reno Carollo 2" x 8"

**Historical or Mythical**



First: *Collector's Pride* by Ruth K. Penn 4 1/4" x 3 3/4"

**Interior or Still Life**



First: *Persimmons, Jars 'n Jug* by Wayne Waldron  
3" x 2 1/2"

**Landscape**



First: *Winter Totems* by Joanne Chambers 4 1/2" x  
3"

**Marine**



First: *The North Sea Canal Near Amsterdam* by  
John Vandenengel 4 3/4" x 3 1/4"

**Portrait**



First: *Nicus And Tatus* by Mariela Villasmil-  
Kaminski 2 3/4" x 2 3/4"

**Purchase to Permanent Collection**



*Retro Mime* by Volodya Kenarev 3 1/4" x 2 3/4"