

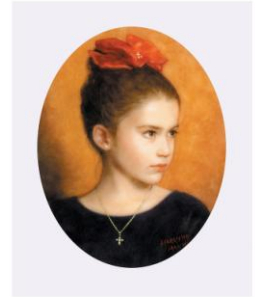
33rd Annual International Miniature Show Awards ~ *The Miniature Art Society of Florida*



Best of Show
 Rachelle Siegrist
The Mountaineer
 2" x 3"



Judge's Second Choice
 Linda Rossin
Sunshine And Friends (Cat)
 4" x 3"



Best Traditional Portrait Miniature
 Markissia Touliatos
Girl With Red Bow
 2 1/4" x 3 1/4"



Best Work By A Young Artist
 Rebecca Lathan
Symphony of Light - Mute Swan
 5 1/2" x 3 1/4"



Best Work By A First Time Entrant
 Eddie Deran Sargent
Tube Sponge Lobster Community - 1/1
 5" x 4"



Chronicle 4 3/4" x 3 1/4"



Stones #14 4" x 3"

Excellence In All Entries
 Janet Laird-Lagassee



Pumpkins #56 4 1/2" x 3 1/2"



Power and Strength 5" x 3"



Triad 3" x 2 3/4"



Purchase to Permanent Collection
Luis Arturo Ruiz Contreras
Mistakes
1 1/2" x 1 1/2"



Purchase to Permanent Collection
Susan Brooke
Birdseye View
2 1/2" x 3 1/2"



Second Portrait
Mary Ann Keller
Elnor, 1910 - 2007
3" x 3"



First Portrait
Kay Petryszak
Ryan - Texas Cowboy
2 3/4" x 3 1/2"



Third Marine
Catherine Girard
Cliffs Of Moher - Ireland
5" x 3 1/2"



Second Marine
John S. Styga
Tarpon Springs
3 1/2" x 2 1/2"



First Marine
Mary Chadwell
Pyramid Waves
5" x 3 1/4"



Honorable Mention Landscape
Edmund Whitaker
Sandfell, Iceland
4 3/4" x 1 3/4"



Honorable Mention Landscape
Trevor Young
Sand Dunes - 2, Wittering Beach
3" x 2 1/4"



Third Landscape
Wes Siegrist
White Oak Sinks
2 1/2" x 3 1/2"



**Second
Landscape**
Barbara Stanton
Winter Creekside
2 1/2" x 2"



**First
Landscape**
Miss I. Fry
Gathering Hay
3 3/4" x 2 1/2"



**Third
Interior or Still Life**
Sheila Sanford
Ceramic And Eggs
2 1/2" x 2"



**Second
Interior or Still Life**
Pauline Denyer
Tantalus
3" x 2 1/2"



**First
Interior or Still Life**
Wayne Waldron
Ziaolla 'n Vegetables
3 1/2" x 2 1/2"



**First
Historical or Mythical**
Rita E. Whitaker
The Dream
4" x 2 3/4"



**Second
Human Figure**
Hal Sutherland
Fading Light
3" x 4 1/2"



**First
Human Figure**
Melissa Miller Nece
Determined Stride
2 1/2" x 4 1/2"



**Second
Floral and Botanical**
Barbara Valentine
Roses In A Majolica Vase
2 1/2" x 2 1/2"



**First
Floral and Botanical**
Victoria Vitale
Sunflower
1 1/4" x 2 1/4"



**Third
Exterior or Architectural**
Joyce Rowsell
On The Waterfront, Exeter
4 3/4" x 2 3/4"



**Second
Exterior or Architectural**
Richard William Haynes
Empire Of Light
3" x 3 3/4"



First Exterior or Architectural
Patricia Poirier
Peaceful Setting
4" x 3"



**Honorable Mention
Birds and Animals**
Becky Eiler
Everglades A Chick-Chick - 14/50
4" x 4"



**Honorable Mention
Birds and Animals**
Beth Freeman-Kane
The Poppy Field - Common Quails - 6/10
4 1/2" x 2"



**Honorable Mention
Birds and Animals**
Regina Brewster
The Foraging Party
3 1/4" x 2 1/2"



**Third
Birds and Animals**
Kim J. Bell
Curry
2" x 1 1/4"



**Second
Birds and Animals**
Michael W. Coe
Kingfisher
2 1/4" x 2 3/4"



First Birds and Animals
Tyke Gantz
Magical Winter
4 1/4" x 3"



**Second
Abstract and Surrealism**
Vera Siechtova
Unknown Worlds IV
2 3/4" x 3"



First Abstract and Surrealism
Sherri Tial
Ecclesiastes No. 10
2 1/2" x 7 1/2"



**Honorable Mention
Transparent Watercolor**
Janice Knoll
Ready For Action
2 1/2" x 2 1/2"



**Honorable Mention
Transparent Watercolor**
Sally Tomlinson
Hedge Row
3 1/2" x 2 1/2"



**Honorable Mention
Transparent Watercolor**
Chrysoula Agtyros
Entangled Creeper
3 1/4" x 3 1/4"



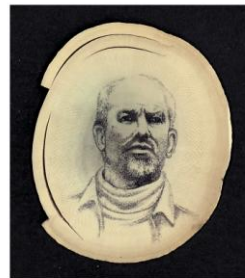
**Third
Transparent Watercolor**
Glenn Leung
Antique Gun #1
5" x 4"



Second Transparent Watercolor
Lois Salmon Truole
The Brass Section
4 1/2" x 3 1/2"



First Transparent Watercolor
Janet Laird-Lagasse
Pumpkins No. 50
4 1/2" x 3 1/2"



**Second
Sculpture and Scrimshaw**
Charles Hargraves
Dr. Norman Bethune
3 1/2" x 4 1/2"



**First
Sculpture and Scrimshaw**
Rick Goib
Conflicting Interests - 4/95
6" x 7"



Second Printmaking
Michael Slattery
Times Square Surveillance - 1/50
4 1/2" x 3"



First Printmaking
Roy Cooney
The Dream Maker
2 1/2" x 3 1/2"



First Fired Porcelain and Enamel
Mariela Villasmil-Kaminski
Angel Of Music
2" x 2"



Third Opaque Watercolor
Mona Diane Conner
Sun Diego Freedom Flag
3 1/2" x 4"



Second Opaque Watercolor
Lynn Ponto-Peterson
Margie And Her Pony
3 1/2" x 3 1/2"



First Opaque Watercolor
Christian Rzyski
C.F.V. 3V. Railway 1 (Cowin)
3 1/2" x 2 1/4"



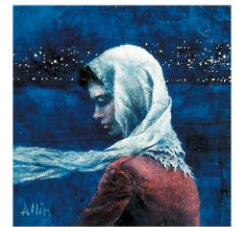
Honorable Mention Oil
Klaus Strubel
Schooner Coronet, 1885
6" x 2 3/4"



Honorable Mention Oil
Clifford T. Bailey
D'Anjou Pears
2" x 2 1/2"



Honorable Mention Oil
Gaylene Fortner
The Kettle Family
4 1/2" x 2 1/2"



Third Oil
Warren Allin
Marie
3 1/2" x 3 1/2"



Second Oil
Jane Mihalik
Orange Basket
4" x 3 3/4"



First Oil
Irina Kouznetsova
Trump Card
2 1/2" x 3 1/2"



Third Mixed Media
Marilyn Peck
Hawkesbury River
4" x 4 1/2"



Second Mixed Media
Barbara Yin
Blue Crane
5" x 3"



First Mixed Media
Brenda Bierdnik
Wisteria
4" x 4"



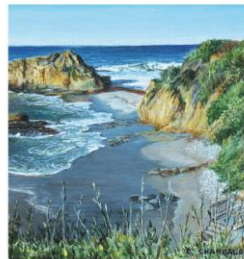
Third Drawing and Pastel
Helen C. Jones
Thirst
1 3/4" x 2 1/4"



Second Drawing and Pastel
Dave Koenig
Adorned
2 3/4" x 3 1/4"



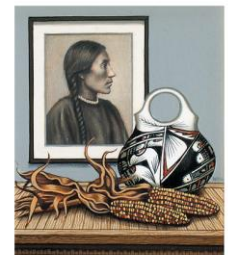
First Drawing and Pastel
Susan Brooke
Sunblock SPF2
3" x 2"



Third Acrylic
Evelyn Sharbaugh
The Blue Pacific
4" x 4 1/4"



Second Acrylic
Frank A. Droege
California Lighthouse
4" x 3"



First Acrylic
Susi Wall
Homage To Native American Women
4" x 4 1/2"